

DUKSUNG WOMEN'S UNIVERSITY



살되, 네 생명을 살아라
생각하되, 네 생각으로 하여라
알되, 네가 깨달아 알아라

Live, but by your own life.
Think, but by your own thoughts.
Know, but from your own enlightenment.

(Founder Ms. Cha Mirisa)

- 정부초청 외국인 대학원장학생 한국어연수기관 (since2018)
The Korean Language Institute for Global Korea Scholarship Program
- GKS 수확대학/대학원 (2021)
GKS(Global Korea Scholarship) Undergraduate·Graduate University
- 덕성여자대학교 프놈펜 예비세종학당 (2020)
Duksung Women's University Phnompenh Preliminary Sejong Institute
- 이민자 사회통합프로그램 일반운영기관 (since2019)
The Korean Immigration & Social Integration Program
- 한국어능력시험(TOPIK) 시행기관(since 2019)
The authorized TOPIK test center
- 한일공동고등교육 유학생교류사업 학부단기과정 운영대학(2021)
Korea-Japan Jointed Higher Education Students Exchange of Undergraduate Short-term Program
- 한국어 교원양성 운영기관(2020)
Korean Teachers Training Program



덕성여자대학교 글로벌교육원
GLOBAL EDUCATION INSTITUTE

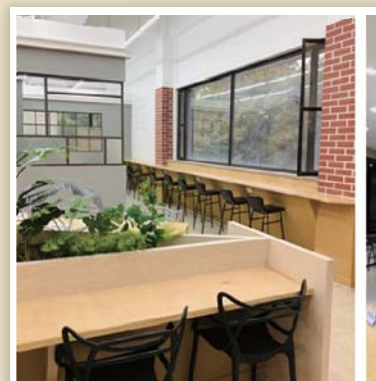


장학금(Scholarships)

Best honor scholarship (최우수상)	Students with best grade in their level whom enrolled for the following semester	Attendance rate 80% & higher than 90%
Honor scholarship (우수상)	Students with best grade in their class whom enrolled for the following semester	Attendance rate 80% & higher than 80%
TOPIK Excellence Scholarship (토픽우수장학금)	Students whom acquired TOPIK level 3 or above while in GEI regular program	Application Fee 50% waived (응시료 50%)
Perfect Attendance scholarship (개근상)	Students whom attended all of 200 hours	Certificate & prize (소정의 상품)

기숙사(Campus Housing)

Dormitory	Type	Fees for 2021 Academic Year
International Hall (글로벌교육원 국제관)	Quad	KRW 249,000/30 nights
	Double	KRW 336,000/30 nights
	Studio	KRW 465,000/30 nights





특별프로그램(Special Programs)

Pronunciation Clinic (발음 교정반)	Improving Korean pronunciation for intermediate/advanced students	Twice a week for 6 weeks
Special class after school (한국어보강반)	Supplementary class for beginners	Twice a week for 6 weeks
Club Activities (취미활동반)	K-POP dance, Korean traditional musical instruments, Soccer club, etc.	Once ~ twice a week (응시료 50%)

문화체험(Cultural Activities)

Cultural Class (문화수업)	Taekwondo, Cooking, Pottery, Tea ceremony etc.	
Visiting(견학)	National traditional/Central Museum, Gyeongbok palace, SAMSUNG Innovation Museum etc.	
Field Trip(체험)	One-day	N Seoul Tower, Traditional market, Amusement Park, Snow-sled, etc.Snow-sled, etc.
	Overnight	Summer/winter camp, Temple stay, etc.Snow-sled, etc.





| 오시는 길(Direction)



인천공항 "도봉성북행 6101번" 수유역 하차 →
수유역 6번출구 → 마을버스 02번 → 경기장학관 하차

From Incheon International Airport
Bus to "Dobong Seongbuk 6101" →
To get off at Suyu Station
Suyu Station Exit 6 → Village bus No. 2 →
To get off at Gyeonggi Scholarship Center

| 문의(Inquiry)



글로벌교육원(Global Education Institute) <http://dilc.ds.ac.kr>
kdilc@duksung.ac.kr ☎+82-2-991-0597

서울시 도봉구 우이천로 381 덕성여자대학교 국제관 119 우편번호)01370
119 International Hall, 381 Uicheon-ro, Dobong-gu, 01370, Korea

